

Submersible Level Sensor

The Level Sensor is a submersible level transducer suitable for liquid level and depth management, typically use in tank/container environments. Stainless steel construction, with hermetically sealed housing makes it suitable for immersion in most industrial liquids and oils.

- Hydrostatic Level Measurement
- Water Pressure Level Measurement
- Well and groundwater monitoring
- Diesel and ULP variants available
- External mounted available



myinsight.io by Powertec is your decision-making partner

Applications include borehole level and reservoir level monitoring, water mains pressure measurement in inspection chambers, power level and outlet pressure measurement on submersible pumps, vessel and storage monitor solutions and surface water monitoring. General use cases include fuel and chemical tank management helping to optimise and provide insight across all size operations.

MAES TE pressure cell, 0.25% accuracy range.

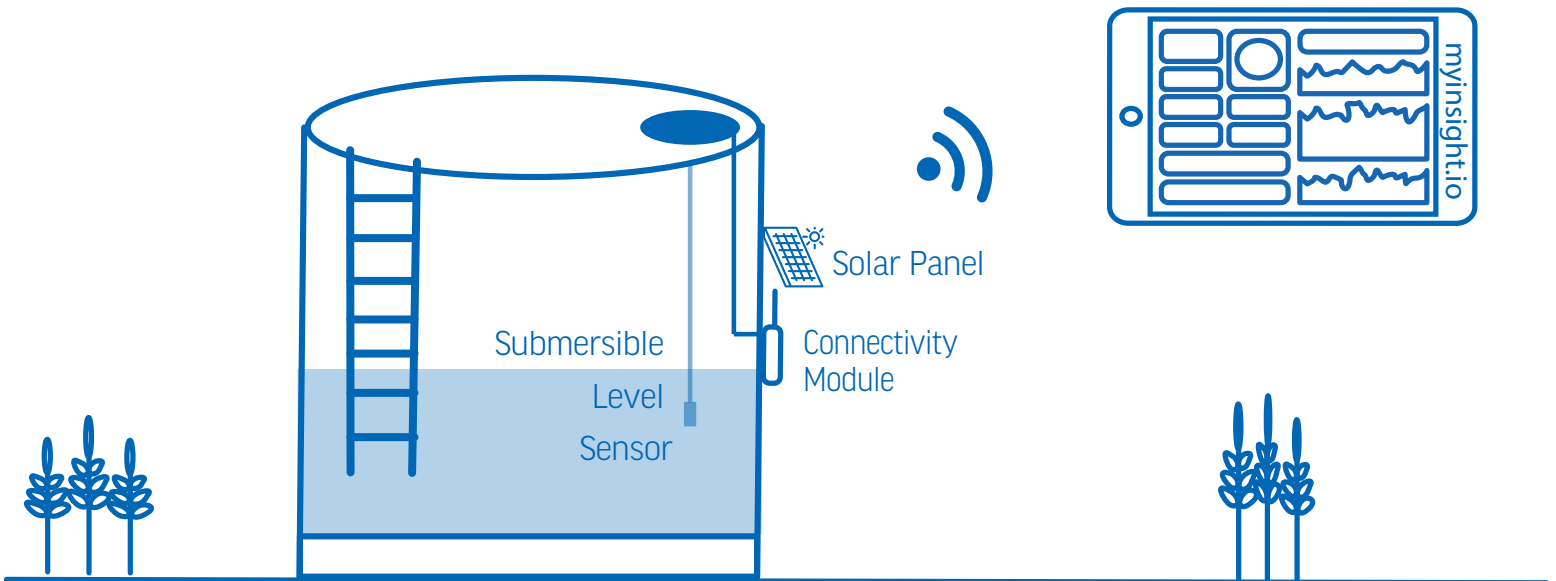
316L stainless steel diaphragm welded 316SS body construction stock and erosion

Custom level ranges from 50cm to 500m

Unique 8 pressure holes design

Optional Lifetime Lightning Protection

Improve decision making



Each Powertec kit can operate standalone or integrate with different sensors and networking requirements, providing flexible options to digitise your operation.

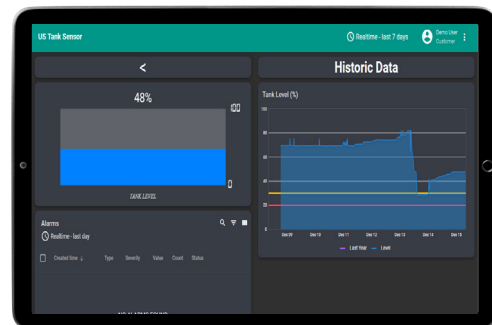
The myinsight.io system is revolutionising the way Australia does business.

myinsight.io is an IoT connectivity suite designed to provide near real-time environmental metrics through a centralised dashboard for day to day operations and management, trend analysis and exportation to third party reporting programs.

Build a clear picture of your entire operation with our suite of sensors and trackers including:

- Local Weather Data
- Rainfall Data
- Soil / Pasture Monitoring
- Delta T Station
- Asset Tracking
- Water Level Monitoring
- Fuel / Silo Level Monitoring

The possibilities are limitless.



- Information is displayed on an interactive and easy-to-use online dashboard
- Make informed farm management decisions
- Manage your operation remotely